

# Scintillating Fiber Detector

M. Isobe, K. Ogawa

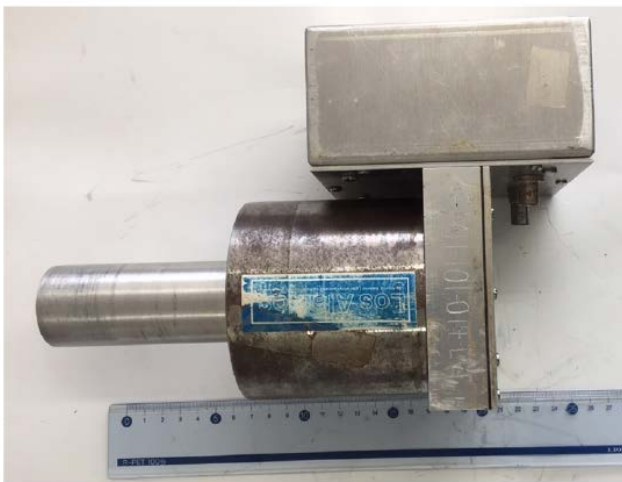
*e-mail: kogawa@nifs.ac.jp*

## 1. Objective

Measurement time evolution of secondary 14 MeV neutron emission rate

## 2. Apparatus

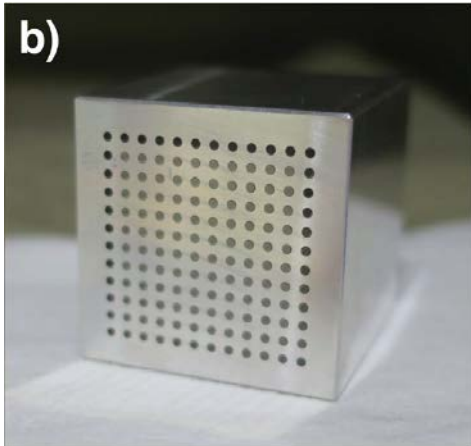
Several types of Scintillating fiber (Sci-Fi) detectors



LANL Sci-Fi detector developed for JT-60U installed on 8-O port. 91 fibers are embedded.



NIFS Sci-Fi detector installed on 2.5-L port. 109 fibers are embedded.



Detector head of Toyama Sci-Fi detector installed on 2.5-L port. 144 fibers are embedded.



Detector head of middle Sci-Fi detector installed on 8-O port. Approximately 500 fibers are embedded.



Detector head of large Sci-Fi detector installed on 8-O port. Approximately 5000 fibers are embedded.

### 3. Name of analysis data / module of My View2

SciFi... Count data of discriminator.

## References

- [1] M. Isobe et al., Review of Scientific Instruments **81** (2010) 10D310.
- [2] M. Isobe et al., IEEE Transactions on Plasma Science **46** (2018) 2050.
- [3] M. Isobe et al., Nuclear Fusion **58** (2018) 082004.
- [4] K. Ogawa et al., Nuclear Fusion **58** (2018) 034002.
- [5] K. Ogawa et al., Review of Scientific Instruments **89** (2018) 10I101.
- [6] N. Pu et al., Review of Scientific Instruments **89** (2018) 10I105.
- [7] N. Pu et al., Plasma and Fusion Research **13** (2018) 3402121.
- [8] K. Ogawa et al., Plasma Physics and Controlled Fusion **60** (2018) 095010.
- [9] E. Takada et al., Review of Scientific Instruments **90** (2019) 043503.
- [10] K. Ogawa et al., Nuclear Fusion **59** (2019) 076017.
- [11] N. Pu et al., Journal of Instrumentation **14** (2019) P10015.
- [12] N. Pu et al., Nuclear Instruments and Methods in Physics Research, **A 969** (2020) 164000.